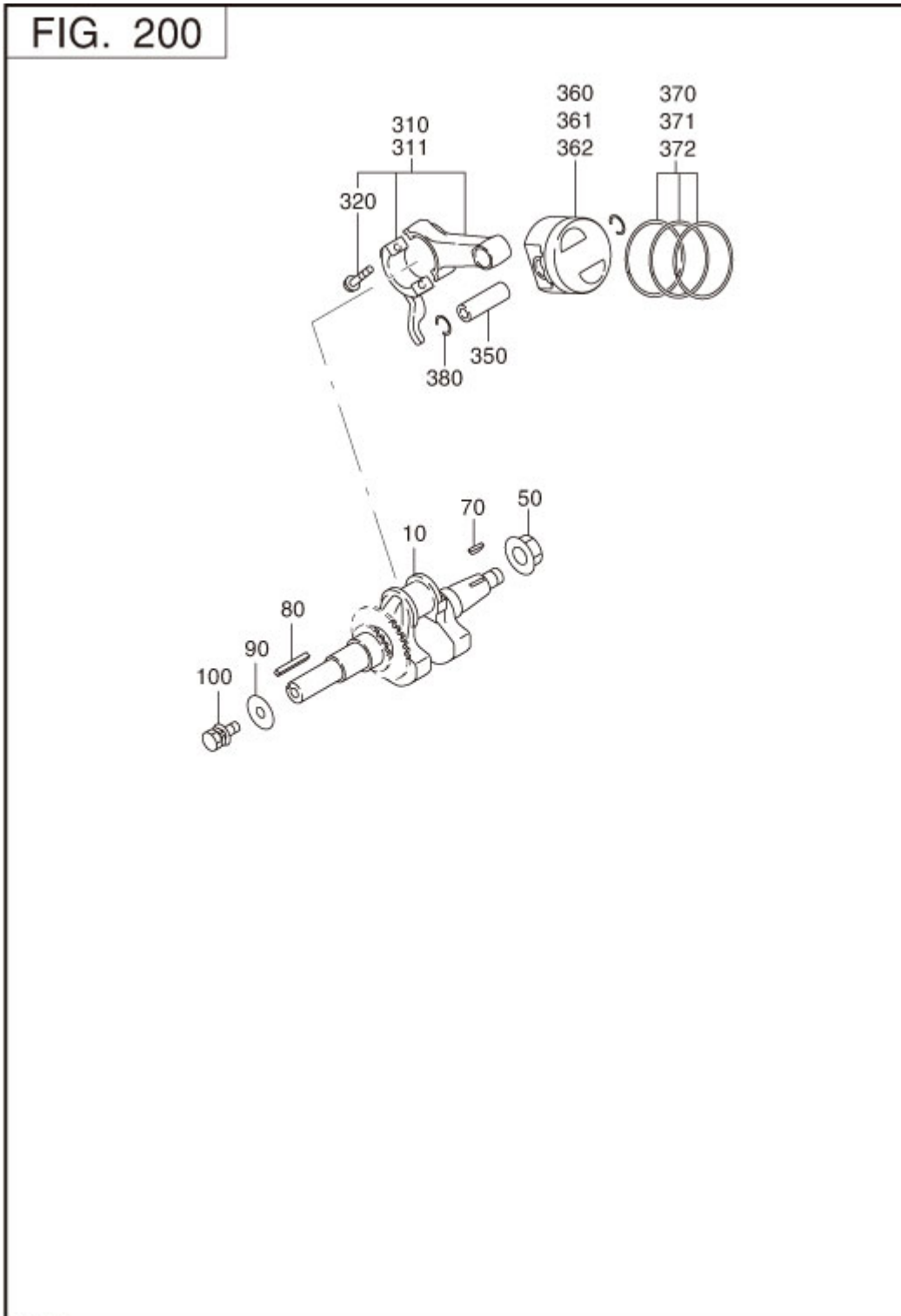




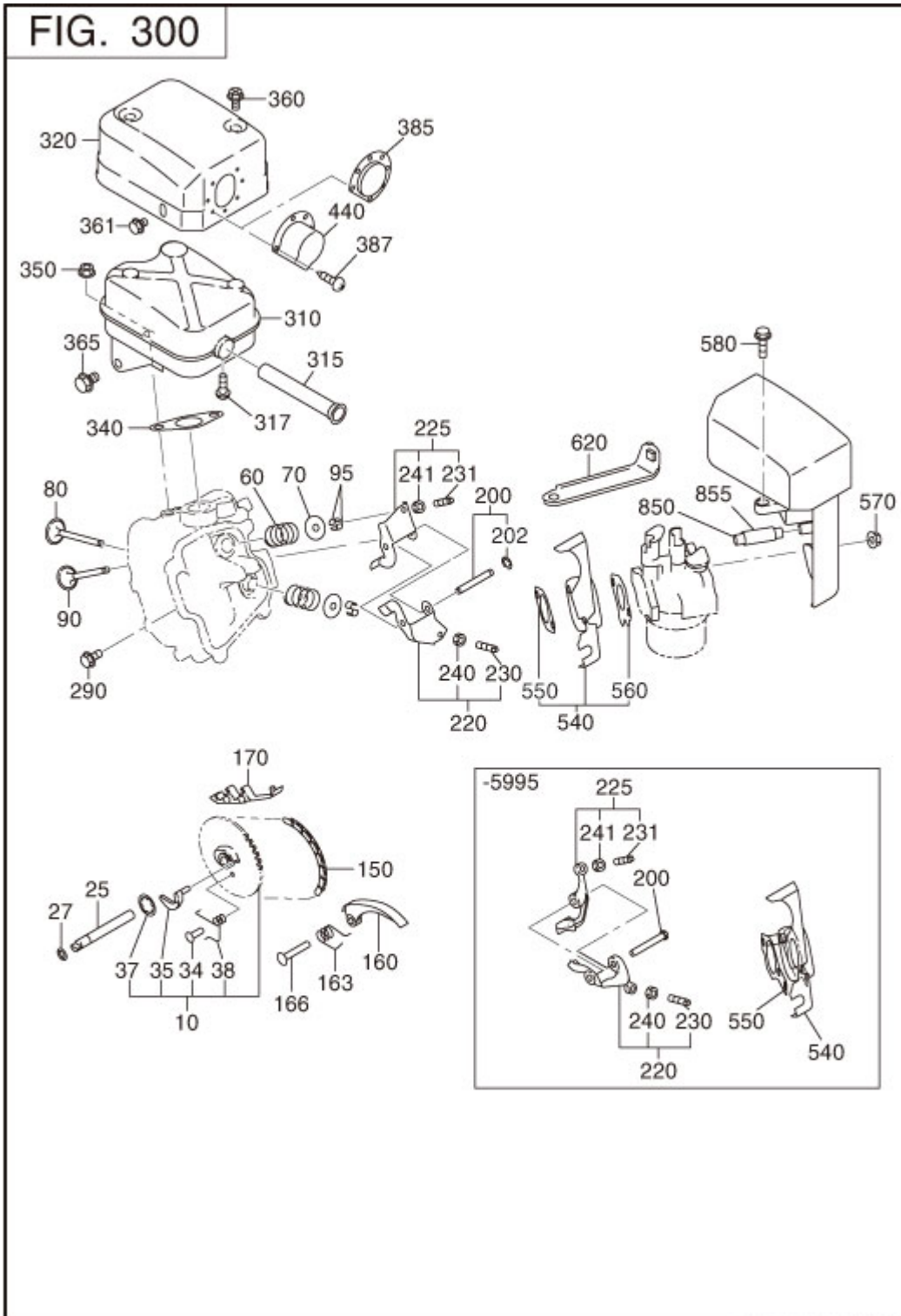
REF.	PART NUMBER	PART NAME	CODE NO.	QTY	REMARKS	INTERCHANGE
10	277-10101-41	CRANK CASE CP	-	1		
20	237-14202-03	VALVE GUIDE	-	2	5.5DX9.5DX27L	
26	277-16010-01	STEM SEAL	-	1	5.5DX9.5DX15DX7.8B	
30	044-02502-00	OIL SEAL	-	1	25DX38DX7B	
40	060-02800-21	BALL BEARING	-	1	28DX58DX16B	
50	277-15011-03	PIPE KNOCK	-	2	10.3DX8.5DX14L	
60	010-50802-50	STUD	-	2	M8X1.25X25L	
70	010-50603-51	STUD	-	2	M6X1.0X98L	
75	044-00600-20	OIL SEAL	-	1	6DX10DX2.5B	
80	040-11400-30	PLUG	-	2	M14X1.5X20DX12L	
90	021-11400-20	GASKET	-	2	14.1DX19DX2.3T	
210	277-11002-21	MAIN BEARING COVER C	-	1	FLANGE 4-5/16-24UNF	
220	044-02502-10	OIL SEAL	-	1	25DX41.25DX6B	
230	060-02501-40	BALL BEARING	-	1	25DX52DX15B	
250	277-45004-J1	GOVERNOR GEAR CP	-	1	53DX29.1T N=33	
260	277-41901-03	GOVERNOR SLEEVE	-	1	6DX7.6DX16DX26L	
270	277-63601-23	OIL GAUGE	-	2	M18X1.5 L=70+18	
280	021-31600-20	GASKET	-	2	16DX23DX1.2T RUBBER	X21-31600-20
300	001-04083-50	FLANGE BOLT	-	6	M8X1.25X16DX35L	
610	277-13001-11	CYLINDER HEAD CP	-	1		
620	277-15001-23	GASKET(HEAD)	-	1	T=0.2	
630	011-00802-40	FLANGE BOLT	-	4	M8X1.25X16DX68L	
631	011-00803-10	FLANGE BOLT	-	1	M8X1.25X16DX33L	
680	277-15503-01	ROCKER COVER CP	-	1		
690	277-16001-13	GASKET(ROCKER COVER)	-	1	T=0.5	
700	277-15011-03	PIPE KNOCK	-	2	10.3DX8.5DX14L	
710	011-00600-20	FLANGE BOLT	-	4	M6X1.0X14DX12L	
960	277-99001-27	GASKET SET	-	1		

2 CRANKSHAFT,PISTON



REF.	PART NUMBER	PART NAME	CODE NO.	QTY	REMARKS	INTERCHANGE
10	277-20901-51	CRANKSHAFT CP	-	1	L=260 DU 19.05DX58.5	
50	018-01400-20	FLANGE NUT	-	1	M14X1.5X28DX12H	
70	032-30300-10	WOODRUFF KEY	-	1	3BX6HX16D	
80	206-26001-13	KEY	-	1	4.75BX4.7HX35L	
310	277-22501-10	CONNECTING ROD AY	-	1	84.5CDX25B 30D-16D	
311	277-22502-00	CONNECTING ROD AY	-	1	0.25 U.S.	
320	277-23001-03	CONNECTING ROD BOLT	-	2	M6X1.0X13DX33L	
350	277-23301-13	PISTON PIN	-	1	16DX11DX48.5L	
360	277-23401-J3	PISTON	-	1	STD (67DX40H)	
361	277-23403-J3	PISTON	-	1	0.25 O.S.(67DX40H)	
362	277-23404-J3	PISTON	-	1	0.50 O.S.(67DX40H)	
370	277-23511-37	PISTON RING SET	-	1	STD(67D) OIL EXPANDE	
371	277-23512-17	PISTON RING SET	-	1	0.25 O.S. OIL EXPAND	
372	277-23513-17	PISTON RING SET	-	1	0.50 O.S. OIL EXPAND	
380	056-51600-10	CLIP	-	2	17.1DX1.4D	

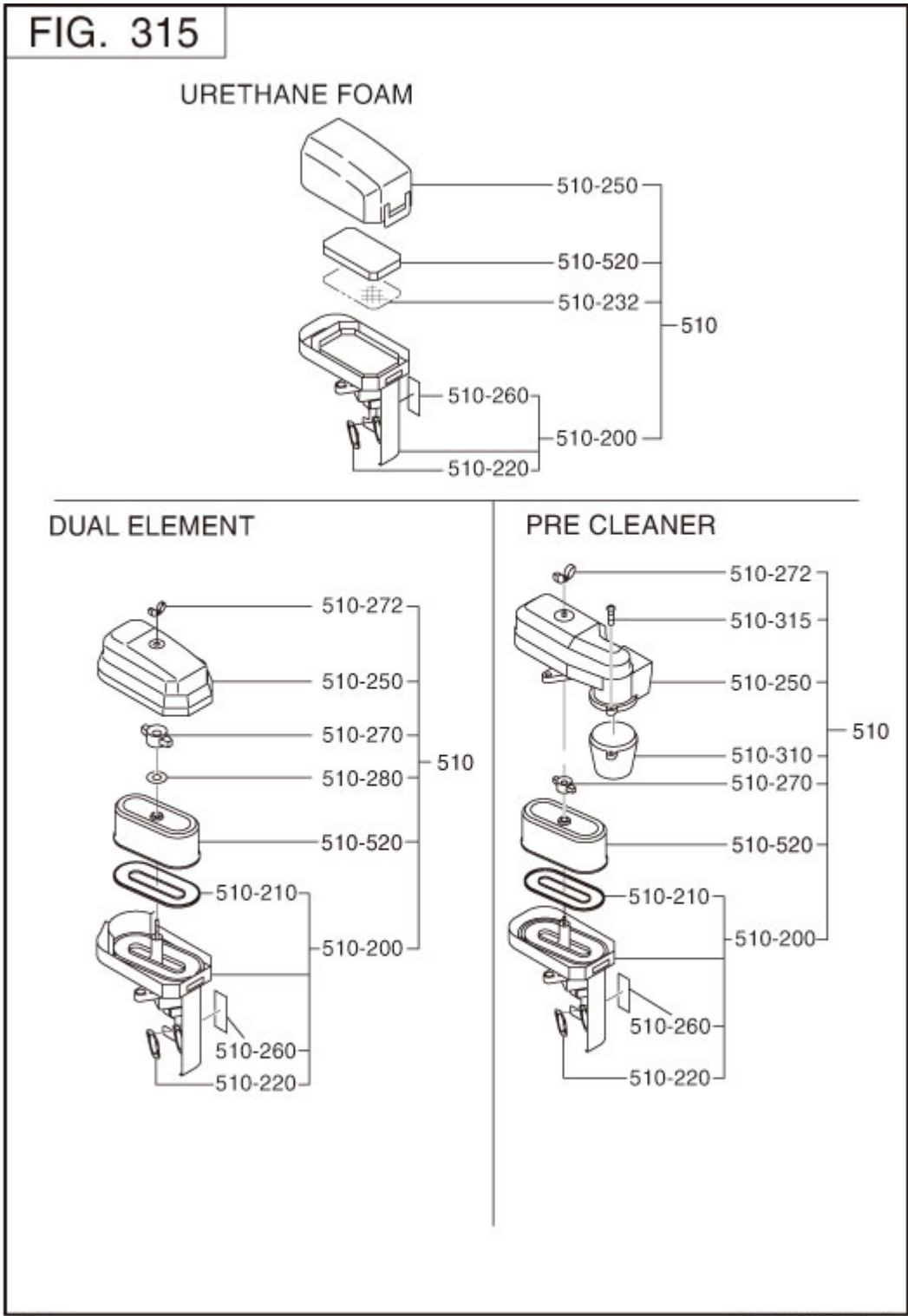
### 3 INTAKE EXHAUST



REF.	PART NUMBER	PART NAME	CODE NO.	QTY	REMARKS	INTERCHANGE
10	277-31601-31	CAM SHAFT CP	-	1	85DX2.9B N=40	
25	277-35101-03	PIN(CAM SHAFT)	-	1	9DX78.5L	
27	024-00600-10	O RING	-	1	5.8DX9.6D	
34	277-38601-03	PIN(SPRING)	-	1	4DX8DX9L	
35	277-36401-03	RELEASE LEVER	-	1		
37	277-36501-03	CLIP	-	1	13.8DX20.3DX0.4T	
38	277-38702-03	RETURN SPRING	-	1	5.1DX0.6DX4.4L N=7	
60	279-33601-03	VALVE SPRING	-	2	19.2DX2.3DX27.4L	
70	269-33701-03	SPRING RETAINER	-	2		
80	277-33401-H3	INTAKE VALVE	-	1	25.5DX5.5DX68.1L	
90	277-33501-H3	EXHAUST VALVE	-	1	23.5DX5.5DX68.1L	
95	132-10KA0-31	COLLET-VALVE	-	4		
150	277-35601-11	TIMING CHAIN CP	-	1	88 LINK	
160	277-36911-03	TENTIONER	-	1		
163	277-37101-03	SPRING(TENTIONER)	-	1	10DX1.8DX14L N=4.5	
166	277-36902-03	PIN(TENTIONER)	-	1	6DX13DX34L	
170	277-36913-13	CHAIN GUIDE	-	1		
200	277-35002-01	PIN(ROCKER) CP	-	1	6DX46L	
202	003-13050-00	CLIP	-	1	5DX11DX0.6T	
220	277-36201-00	ROCKER ARM(IN) AY	-	1		
225	277-36202-00	ROCKER ARM(EX) AY	-	1		
230	014-90500-20	ADJUST SCREW	-	1	M5X0.5X23L	
231	014-90500-20	ADJUST SCREW	-	1	M5X0.5X23L	
240	017-00500-30	NUT	-	1	M5X0.5X4.1H	
241	017-00500-30	NUT	-	1	M5X0.5X4.1H	
290	011-00600-20	FLANGE BOLT	-	1	M6X1.0X14DX12L	
310	277-30101-J1	MUFFLER CP	-	1		
320	277-34204-21	MUFFLER COVER CP	-	1		
340	277-35201-13	GASKET(MUFFLER)	-	1	T=0.2 26D 9DX58P	
350	980-20082-80	FLANGE NUT	-	2		
360	015-20600-90	TAPPING BOLT	-	2	M6X13DX10L	
361	011-00600-10	FLANGE BOLT	-	1	M6X1.0X14DX8L	
365	011-00803-20	FLANGE BOLT	-	1	M8X1.25X16DX12L	
387	015-00400-60	TAPPING SCREW	-	2	M4X6L	
440	277-37001-H1	DEFLECTOR CP	-	1	W/SCREEN	

REF.	PART NUMBER	PART NAME	CODE NO.	QTY	REMARKS	INTERCHANGE
540	277-32903-H1	INSULATOR CP	-	1		
550	277-35903-J3	GASKET2(INSULATOR)	-	1	T=0.5	
560	277-35902-J3	GASKET1(INSULATOR)	-	1	T=0.5	
570	002-38060-00	FLANGE NUT	-	2	M6X1.0X13DX6H	
580	011-00600-50	FLANGE BOLT	-	1	M6X1.0X13DX20L	
850	277-32760-08	BREATHER PIPE	-	1	8DX11DX104L	085-10800-00

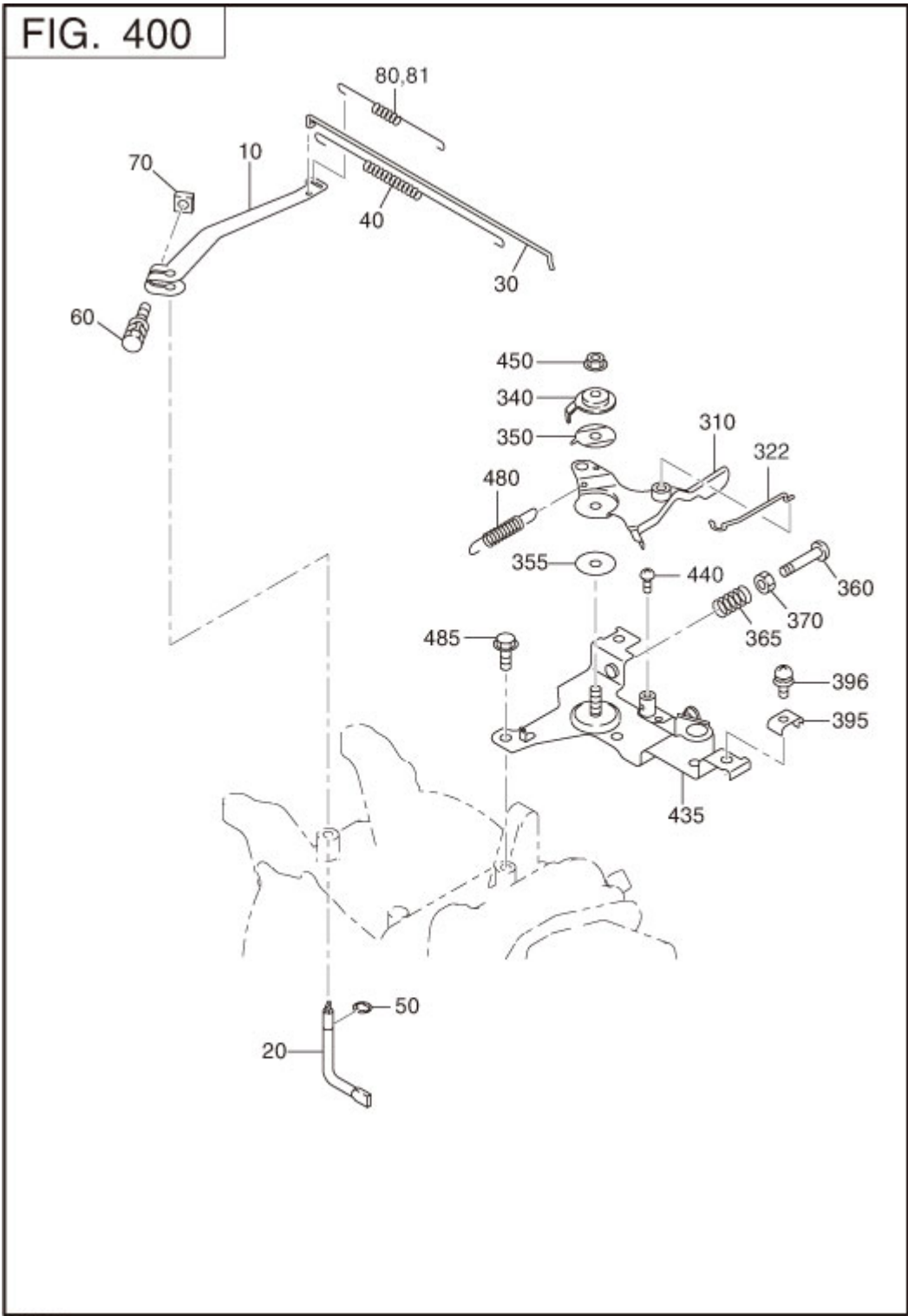
### 3 INTAKE EXHAUST





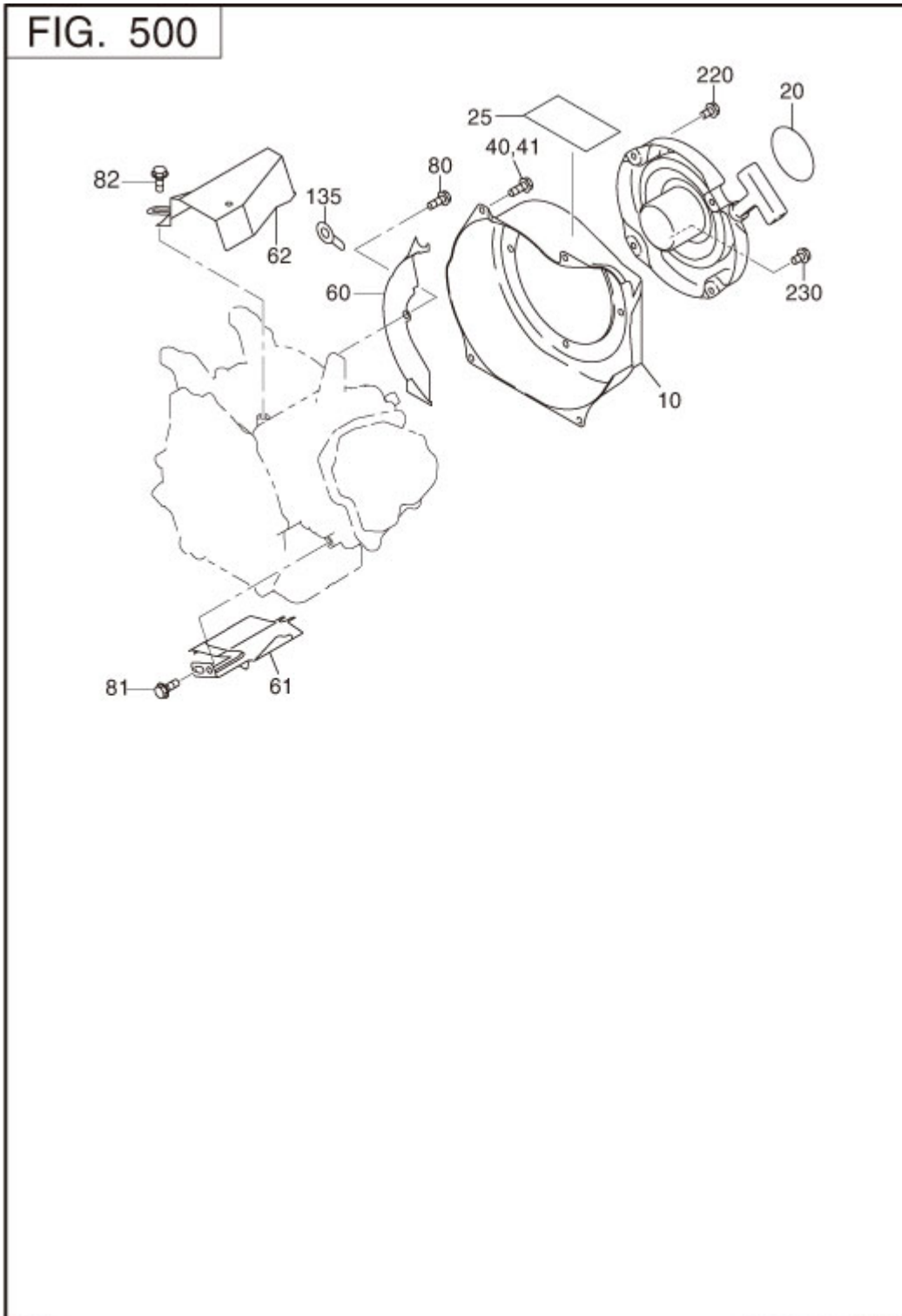
REF.	PART NUMBER	PART NAME	CODE NO.	QTY	REMARKS	INTERCHANGE
510	277-32611-10	AIR CLEANER AY	-	1	URETHANE FOAM	
-200	277-32601-18	BASE CP	-	1		
-220	277-32604-08	PACKING	-	1		
-250	277-32602-08	COVER CP	-	1		
-260	277-32609-08	LABEL	-	1		
-520	277-32603-08	ELEMENT	-	1	URETHANE FOAM	

### 4 GOVERNOR OPERATION



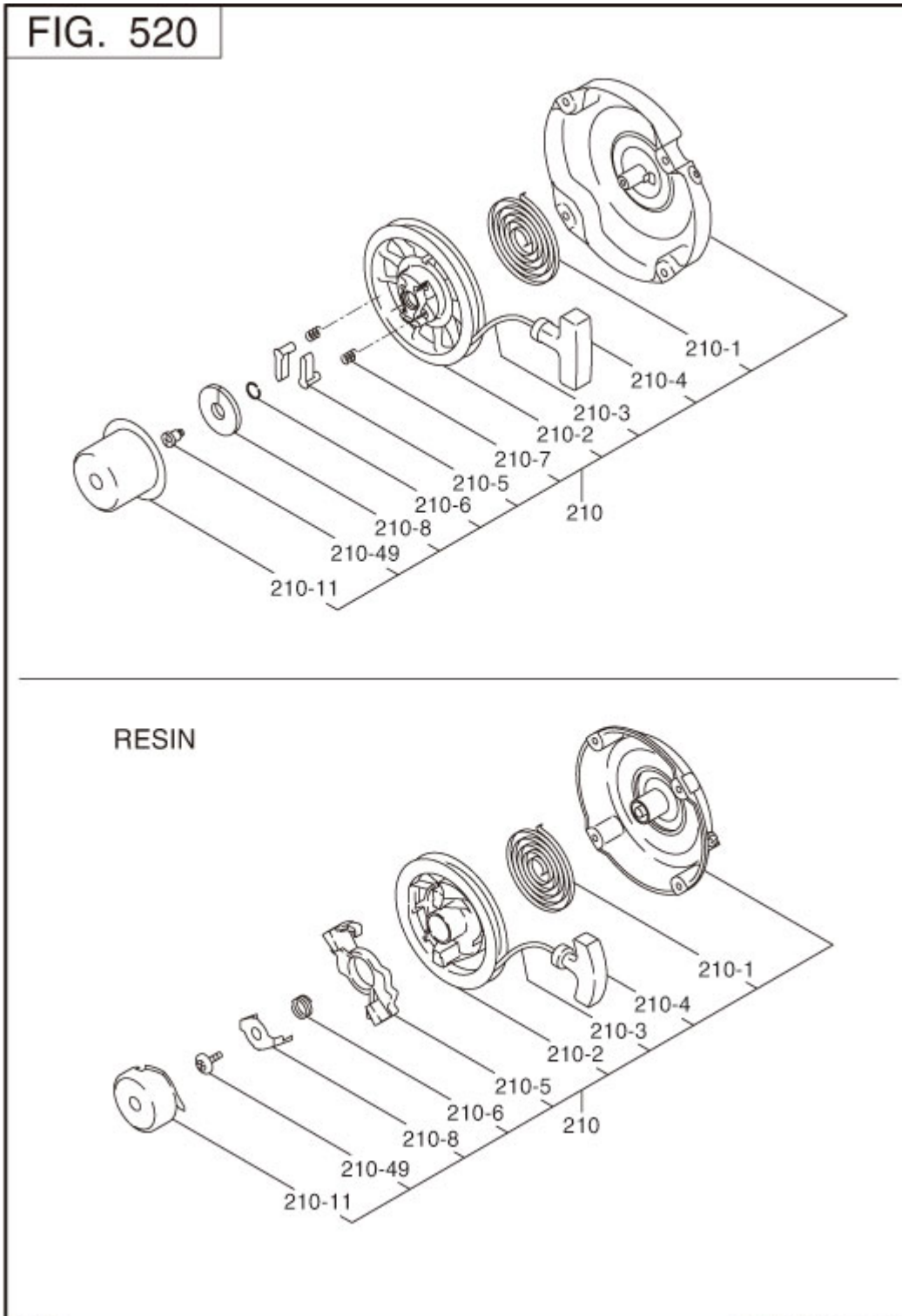
REF.	PART NUMBER	PART NAME	CODE NO.	QTY	REMARKS	INTERCHANGE
10	277-42301-33	GOVERNOR LEVER	7539-	1		
	277-42301-23	GOVERNOR LEVER	-7538	1		277-42301-33
20	277-42201-33	GOVERNOR SHAFT	-	1		
30	277-42701-11	GOVERNOR ROD CP	-	1		
40	277-42801-23	ROD SPRING	-	1	7DX0.5DX182L N=16	
50	003-13050-00	CLIP	-	1	5DX11DX0.6T	
60	013-00602-40	BOLT AND WASHER AY	-	1	M6X1.0X25L W/TWO W	
70	018-60600-20	NUT	-	1	M6X1.0X4.9H SQUARE	
80	277-42503-13	GOVERNOR SPRING	7426-	1		
	277-42503-03	GOVERNOR SPRING	-7425	1	7.5DX0.7DX123L N=16	
310	277-43303-01	SPEED CONT.LEVER CP	-	1	W/SWIVEL	
322	277-43701-01	LINK ROD CP	-	1		
340	277-43502-03	STOP PLATE	-	1		
350	277-44501-03	WASHER	-	1		
355	021-70600-70	FRICTION WASHER	-	1	6.5DX24DX0.8T NYLON	
360	004-31062-50	SCREW	-	1	M6X1.0X25L	
365	237-45004-23	SPRING (ADJUST)	-	1	6.9DX0.9DX20L N=7	
395	277-43902-03	CLAMP	-	1		
396	013-10500-30	SCREW AND WASHER AY	-	1	M5X0.8X20L W/W,SW	
435	277-46004-01	SPEED CONT.BRKT CP	-	1		
440	004-31040-80	SCREW	-	1	M4X0.7X8L	
450	002-35060-00	SELF LOCK NUT	-	1	M6X1.0X6.8H	
480	277-45103-03	RETURN SPRING	-	1	7DX0.7DX28L N=15	
485	011-00600-20	FLANGE BOLT	-	2	M6X1.0X14DX12L	

5 COOLING STARTING



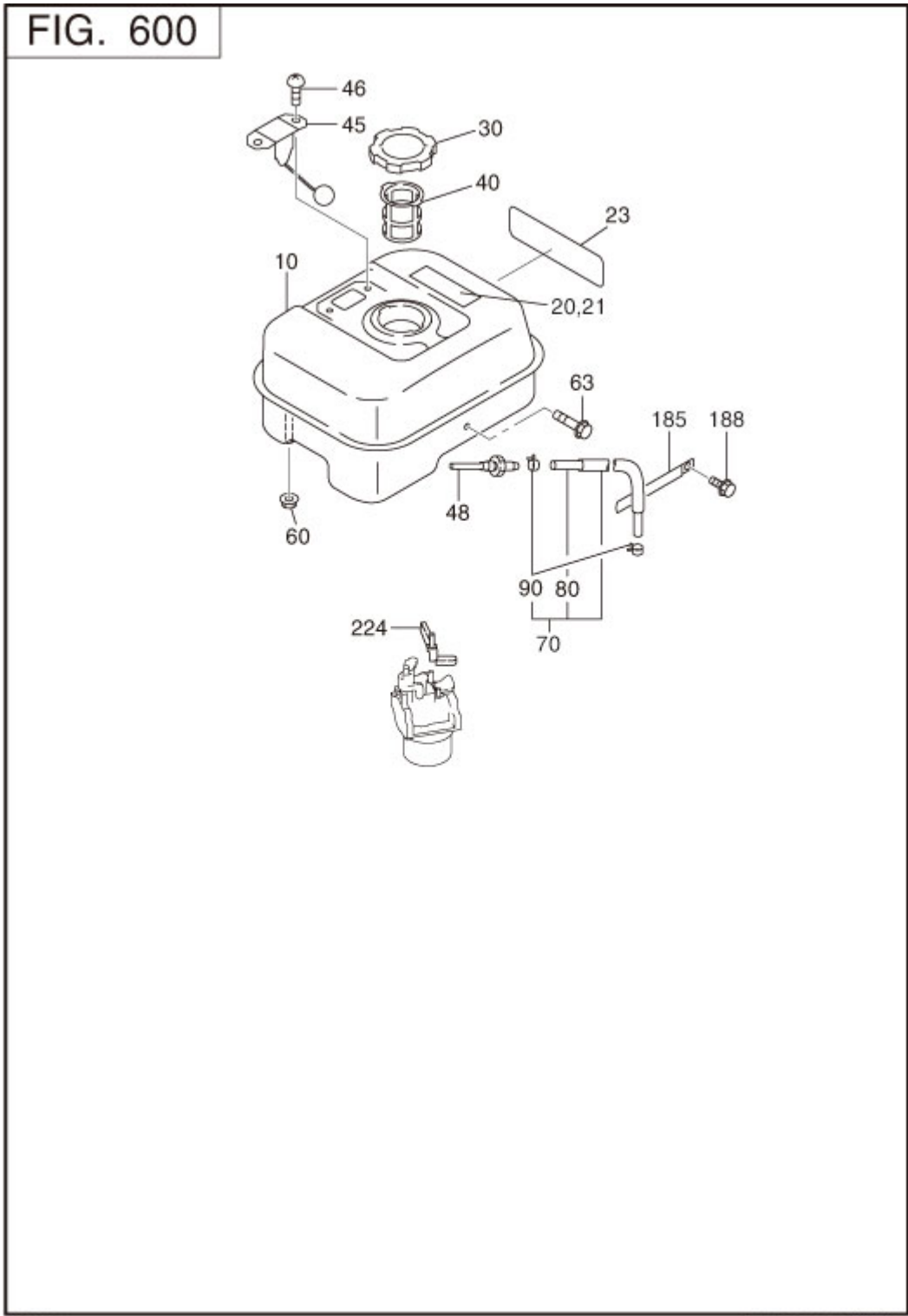
REF.	PART NUMBER	PART NAME	CODE NO.	QTY	REMARKS	INTERCHANGE
10	277-51202-01	BLOWER HOUSING CP	-	1	BLACK	
20	073-20054-70	LABEL(TRADE MARK)	-	1	60D	
40	011-00600-30	FLANGE BOLT	-	4	M6X1.0X14DX14L	
60	277-52711-21	BAFFLE 1(CASE) CP	-	1		
61	277-52702-03	BAFFLE 2(HEAD)	-	1		
80	001-04061-60	FLANGE BOLT	-	1	M6X1.0X13DX16L	
81	011-00600-20	FLANGE BOLT	-	1	M6X1.0X14DX12L	
220	013-00602-81	BOLT AND WASHER AY	7484-	4	M6X1.0X14L W/SW	
	013-00602-80	BOLT AND WASHER AY	-7483	4	M6X1.0X14L W/SW	

5 COOLING STARTING



REF.	PART NUMBER	PART NAME	CODE NO.	QTY	REMARKS	INTERCHANGE
210	277-50301-00	RECOIL STARTER AY	-	1	160PD RESIN	
- 1	226-50716-08	SPIRAL SPRING	-	1		
- 2	277-50121-08	REEL	-	1		
- 3	277-50110-08	STARTER ROPE	-	1		
- 4	281-50300-08	STARTER KNOB	-	1		
- 5	281-50325-08	RATCHET	-	1		
- 6	281-50330-08	FRICTION SPRING	-	1		
- 8	281-50340-08	FRICTION PLATE	-	1		
- 11	277-50145-08	STARTER PULLEY	-	1		
- 49	281-50351-08	CENTER SCREW	-	1		

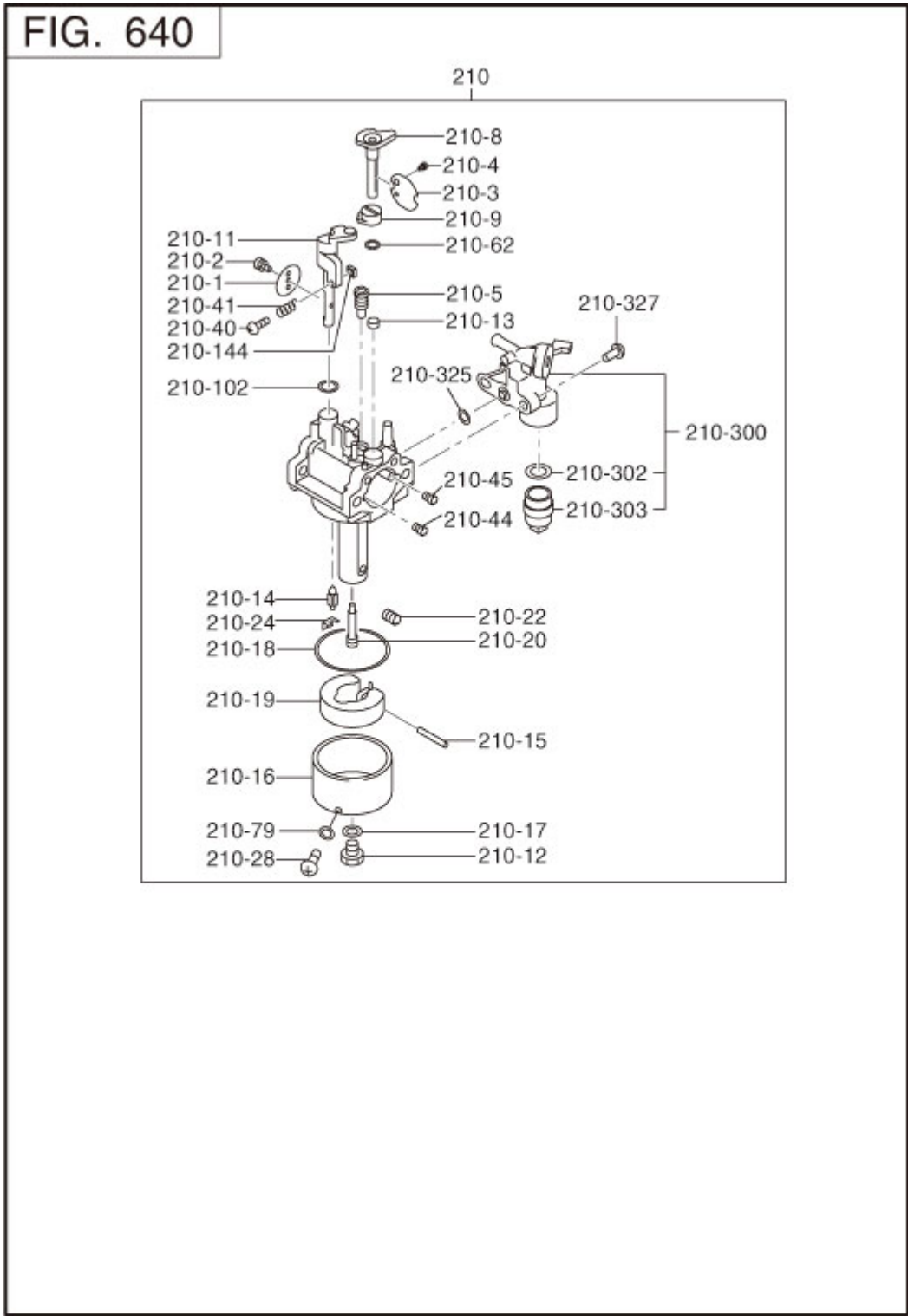
6 FUEL LUBRICANT





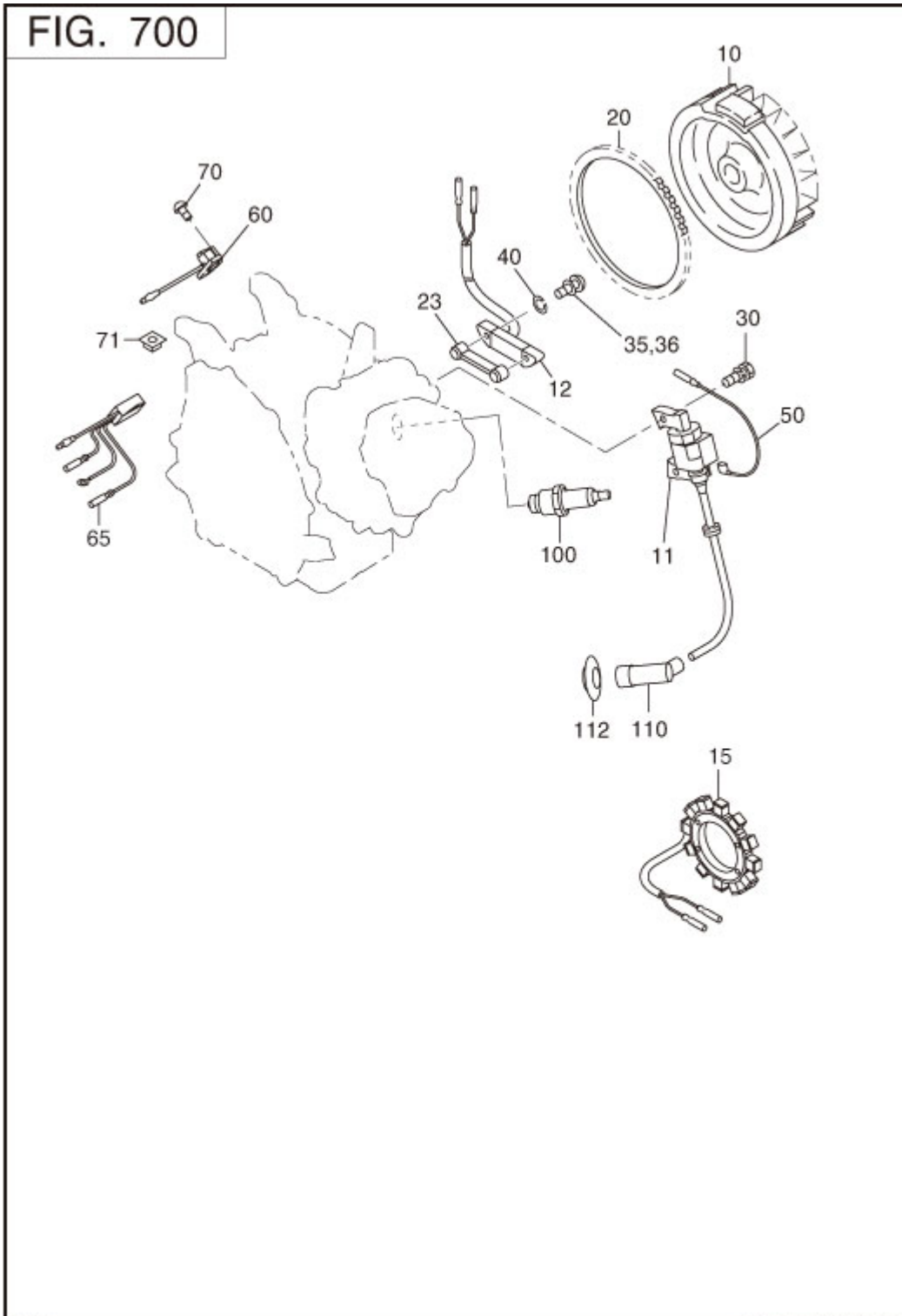
REF.	PART NUMBER	PART NAME	CODE NO.	QTY	REMARKS	INTERCHANGE
10	277-60102-11	FUEL TANK CP	-	1		
20	073-20054-90	LABEL(WARNING)	-	1	42X104	
23	277-95111-03	LABEL(MODEL)	-	1	28X99	
30	043-04400-50	FUEL TANK CAP CP	-	1	43DX68DX14H BLACK	
40	X64-13600-10	FUEL FILTER	-	1		
48	X50-51200-20	UNION	-	1		
60	002-38060-00	FLANGE NUT	-	2	M6X1.0X13DX6H	
63	011-00601-30	FLANGE BOLT	-	1	M6X1.0X14DX25L	
70	277-62601-11	FUEL PIPE CP	-	1		
80	X85-10613-51	RUBBER PIPE	-	1	6.4DX12.7DX150L	X85-10610-00
90	X56-11100-60	HOSE CLAMP	-	2	11.5DX8BX0.7T	
224	277-43801-01	CHOKE LEVER CP	-	1		

6 FUEL LUBRICANT



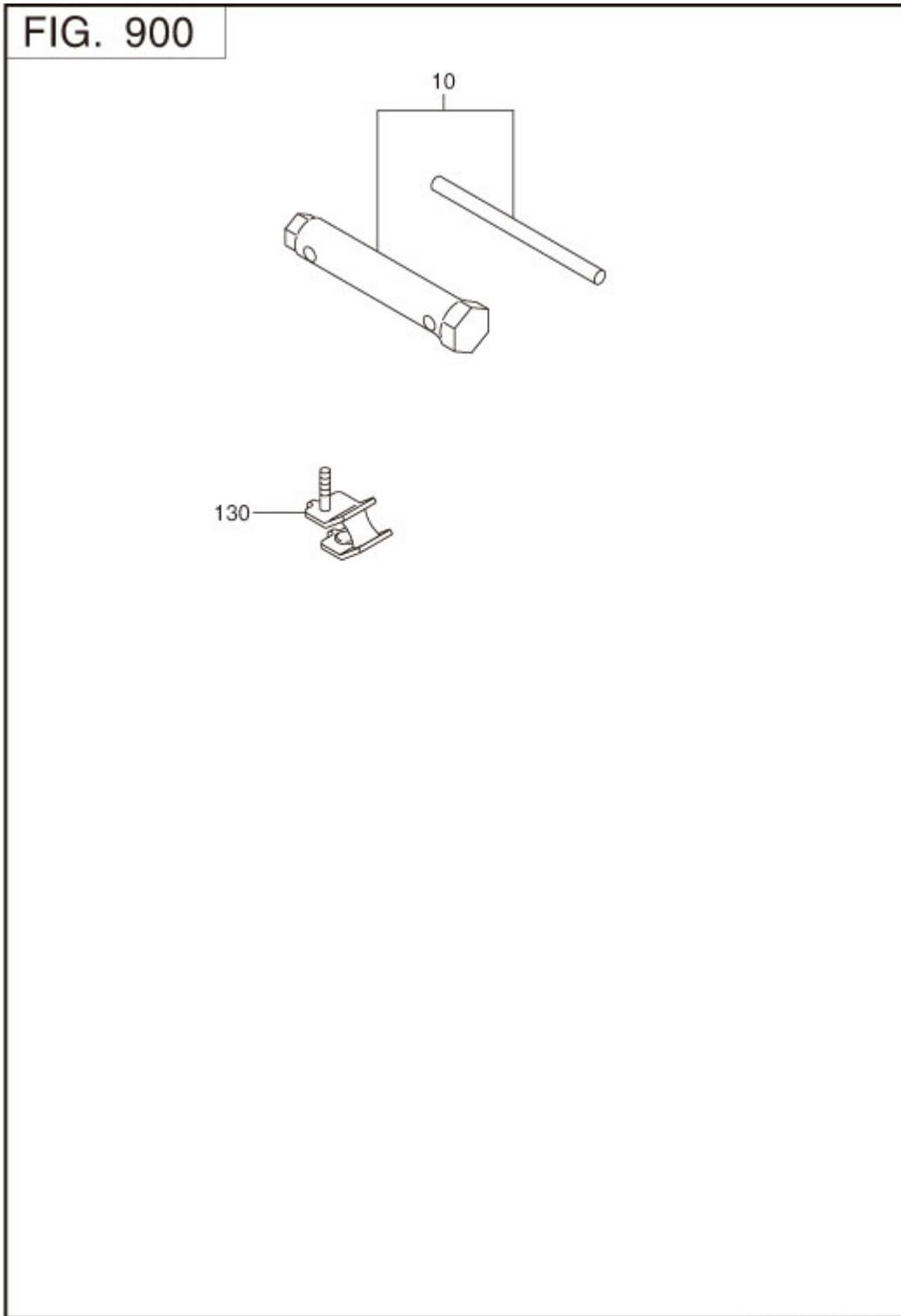
REF.	PART NUMBER	PART NAME	CODE NO.	QTY	REMARKS	INTERCHANGE
210	277-62301-30	CARBURETOR AY	-	1		
- 1	277-62535-08	THROTTLE VALVE	-	1	#160	
- 2	209-62351-08	SCREW	-	1		
- 3	277-62525-08	CHOKE VALVE	-	1		
- 5	246-62420-08	PILOT JET	-	1	#40	
- 8	277-62520-08	CHOKE LEVER	-	1		
- 11	277-62530-18	THROTTLE SHAFT-A	-	1		
- 12	227-62451-08	BOLT	-	1		
- 14	277-62500-08	NEEDLE	-	1		
- 15	277-62515-08	PIN	-	1		
- 16	277-62506-08	FLOAT BODY AY	-	1		
- 17	214-62450-08	PACKING	-	1		
- 18	214-62540-08	CHAMBER PACKING	-	1		
- 19	226-62506-08	FLOAT	-	1		
- 20	277-62440-08	MAIN NOZZLE	-	1		
- 22	277-62402-08	MAIN JET	-	1	#81.3	
- 24	226-62701-18	CLIP	-	1		
- 28	277-62360-08	BOLT	-	1		
- 40	106-62556-08	SCREW	-	1		
- 41	283-62357-08	SPRING	-	1		
- 44	248-62410-08	AIR JET	-	1		
- 45	106-62410-08	AIR JET(PILOT)	-	1		
- 79	236-62541-08	PACKING	-	1		
-144	277-62553-08	NUT	-	1		
-300	279-62103-10	COCK BODY-A	-	1		
-302	277-62110-18	PACKING	-	1		
-303	277-62100-18	CUP	-	1		
-325	277-62552-08	O-RING	-	1		
-327	165-62377-08	SCREW	-	2		

7 ELECTRIC DEVICE



REF.	PART NUMBER	PART NAME	CODE NO.	QTY	REMARKS	INTERCHANGE
10	277-79230-11	FLYWHEEL CP	-	1	MARK MF5330	
11	277-79431-11	IGNITION COIL CP	7527-	1	MARK BM3803	
	277-79431-01	IGNITION COIL CP	-7526	1	MARK BM3790	277-79431-11
30	001-14062-50	BOLT AND WASHER AY	-	2	M6X1.0X25L W/W,SW	
50	277-73106-21	WIRE 6 CP	-	1		
60	226-72706-11	STOP SWITCH	-	1		
70	004-36041-20	SCREW AND WASHER AY	-	1	M4X0.7X12L W/SW	
71	277-49001-01	PLATE NUT(STOP) CP	-	1		
100	065-01407-40	SPARK PLUG	-	1	NGK BR4HS	
110	065-50002-70	SPARK PLUG CAP	-	1		

9 ACCESSORIES LABEL



REF.	PART NUMBER	PART NAME	CODE NO.	QTY	REMARKS	INTERCHANGE
10	277-90301-H0	ACCESSORY TOOL KIT	-	1		